

# Configurator Profile Thermocouple

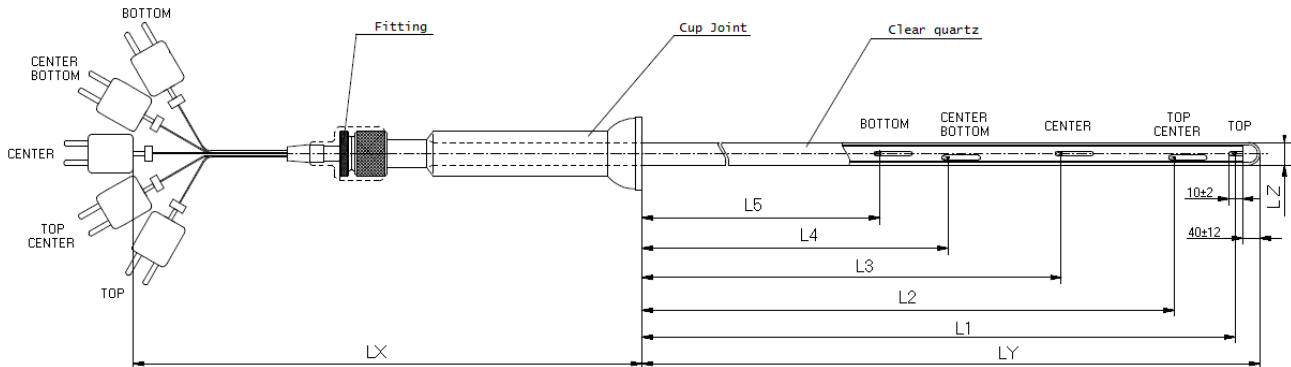
Name of Company: \_\_\_\_\_

Date: \_\_\_\_\_

Using the configurator

ID number: \_\_\_\_\_

- Fill in your company name and the current date.
- Fill in your ID item code for easy identification
- Fill out the form completely.
- Give Tempco NL a phonecall for any Q&R at +31(0)172-493141
- Please send completed form to [waihey.liu@tempco-sensors.nl](mailto:waihey.liu@tempco-sensors.nl)



Example profile thermocouple

## Materials

New noble metal wires

Refurbished (New for old)

## Calibration

Type

S (Pt10%Rh-Pt)

R (Pt13%Rh-Pt)

B (Pt6%Rh-Pt30%Rh)

## Wire

0.50 mm

0.35 mm

## Measurement points

3 junctions

5 junctions

7 junctions (wire 0.35 mm only)

## Unit selection

millimeter, mm

inch, in

## Length measurement points

See example drawing

L1  L2  L3  L4  L5

L6  L7

## Quartz length

Enter length LY

Quartz diameter (GE)

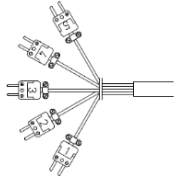
Enter diameter LZ

Termination connection

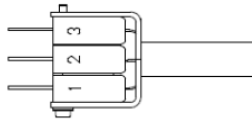
Enter length LX

Cold end termination

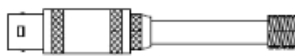
mini TC connectors



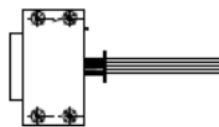
bracket with connectors



LEMO connector

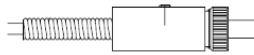


SUB D connector

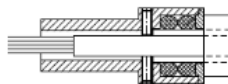


Transition

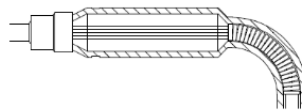
Cajon fitting



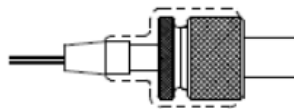
SS tube fitting



Olive

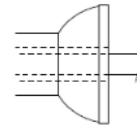


SS screw fitting



Quartz seal

28/15 Cup joint



Please specify complete details and remarks :